



# Dry Goods Valves

## Product Information Sheet

Available for DGC and MTC containers.

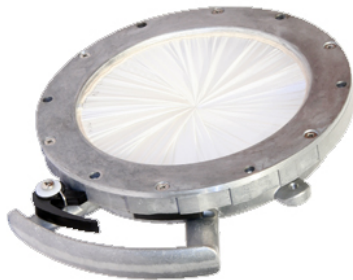


### Iris Valve (BD Type)

Constructed from aluminium the BD Type Iris Valve is a light duty valve specifically designed for infrequent operation, which can be used for both in-line and open discharge operations.

They are suitable for handling materials with bulk densities up to 560 Kg/m<sup>3</sup>.

Can be provided with a protective sleeve.



### Iris Valve (H Type)

Constructed from aluminium the H Type Iris Valve is designed specifically for open discharge applications on outlets of small and intermediate bulk containers (Rigid IBCs).

The H Type is suitable for handling materials with bulk densities up to 900 Kg/m<sup>3</sup>.



A useful option to use in conjunction with the H type Iris Valve is a Liner. A Liner is simply a tube of flexible material, which passes through the valve, which is constricted (or throttled) by a closing diaphragm.

The liner can be of textile or rubber construction.

- Assists the diaphragm opening especially for very low density products.
- Reduces diaphragm wear.
- Isolates the valve and sleeve from the product.
- Provides a means of sealing against a fine product where a high head-load is involved when a rubber liner is used in conjunction with a fabric sleeve.





## Slide Valve

Constructed from aluminium alloy with a stainless steel slide plate, running on nylon 66 adjustable supports. The valve can be used with a wide variety of materials in the chemical, plastics, foodstuffs etc. industries. Maximum operating temperature is 120°C.

Options include stainless steel construction and a double flange.

---

Whilst every attempt has been made to ensure that the information provided in this product information sheet is accurate and reliable Francis Ward cannot accept responsibility for the interpretation of the information provided. It is the responsibility of the user to determine the chemical compatibility of the container with its intended contents.



**Francis Ward** – A Division of The Rotational Mouldings Group

Brook House, 221 Bowling Back Lane, Bradford, BD4 8SJ, UK

Tel: +44 (0)1274 707030 | Fax: +44 (0)1274 724704 | Email: [sales@francisward.com](mailto:sales@francisward.com) | Web: [www.francisward.com](http://www.francisward.com)