



# MTS

## Product Information Sheet

### Standard Specification

#### Dimensions

Width/Depth/ (mm)	1145/1145
Filling inlet diameter (mm)	350
Outlet diameter (mm)	50
Tare weight (kg)	See product range
Capacity (L)	See product range

#### Composition

Liner	LMDPE <sup>1</sup>
Framework with anti-tilt bars	Mild Steel (galvanised)
Inlet / Seal	HDPE <sup>2</sup> / SR <sup>3</sup>
Outlet / Seal	UPVC <sup>4</sup> / EPDM <sup>5</sup>

#### Options

Various valves / seals, including Viton  
 Full fork tunnels on frame (maximum handling stability)  
 Coloured liner  
 Anti-static liner  
 Various vents  
 Top fittings  
 Vinyl logos / vinyl fluid level indicators

1 - Linear Medium Density Polyethylene    3 - Silicone Rubber  
 2 - High Density Polyethylene            4 - Unplasticised Polyvinyl Chloride  
 5 - Ethylene Propylene Diene Monomer (rubber compound)

#### Description

The MTS is a reusable IBC designed for the transportation and storage of liquids.

The MTS liner is rotationally moulded in natural UV stabilised linear medium density polyethylene. The polymer has strong resistance to industrial wear and tear. The liner is supported and protected by a weather proof galvanised mild steel frame with mesh up to the lower bumper bar. The MTS is interstackable for loading and space saving and has integral four way fork truck entry with anti-tilts to improve handling efficiency.

The liner inlet which is 350mm in diameter has a HDPE<sup>2</sup> screw cap fitted with an SR<sup>3</sup> O-ring seal as standard. The outlet is a 50mm single union PVC<sup>4</sup> ball valve fitted with EPDM<sup>5</sup> seals. It is attached to the liner via a fusion welded 50mm BSP male threaded socket. A 50mm BSP female threaded end on each side of the valve terminates with a 50mm male camlock adaptor and dustcap. The dustcap acts as a secondary closure and is attached to valve U-bolt via a stainless steel chain. The outlet assembly is protected by a reinforced LMDPE<sup>1</sup> valve protection housing.



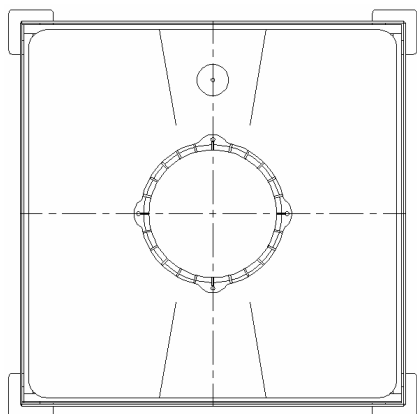
Container shown is a MTS 800

- A multi-trip silo IBC for the transportation and storage of liquids
- Low centre of gravity for greater stability
- Wide range of outlet options
- 4 way fork lift truck entry
- Anti-static liner option

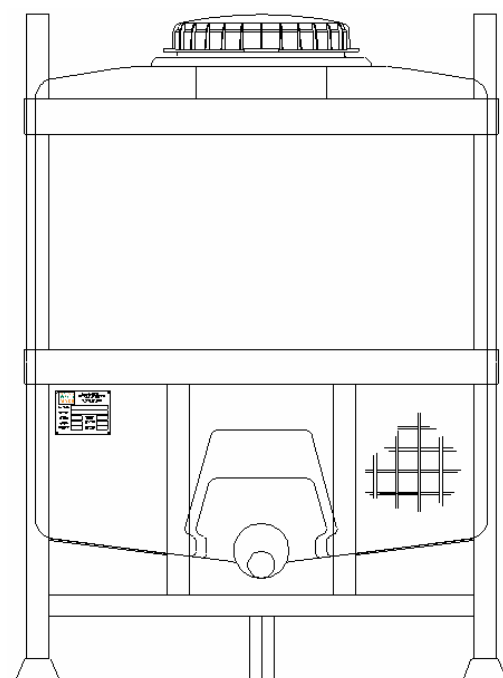
*continued overleaf*

## MTS Product Range

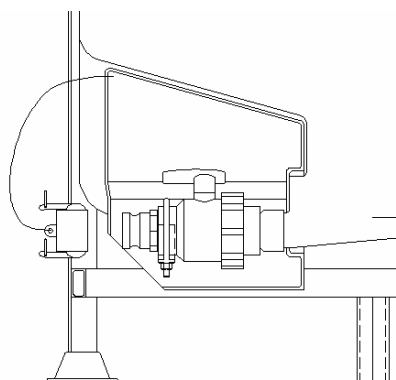
Type	Volume litres	Dimensions Width/Length/Height mm	Weight Kg
MTS 600	600	1145 / 1145 / 1105	155
MTS 800	800	1145 / 1145 / 1320	160
MTS 1000	1000	1145 / 1145 / 1525	185
MTS 1200	1200	1145 / 1145 / 1755	195



Plan View



Front Elevation



Outlet View

Whilst every attempt has been made to ensure that the information provided in this product information sheet is accurate and reliable Francis Ward Limited cannot accept responsibility for the interpretation of the information provided

It is the responsibility of the user to determine the chemical compatibility of the container with its intended contents..



Francis Ward Limited

Brook House, 221 Bowling Back Lane, Bradford, BD4 8SJ, UK

Tel: +44 (0)1274 707030 Fax: +44 (0)1274 724704

Email: [sales@francisward.com](mailto:sales@francisward.com)

Website: [www.francisward.com](http://www.francisward.com)