



STL

Product Information Sheet

Standard Specification

Dimensions

Width/Depth/Height (mm)	See product range
Filling Inlet diameter (mm)	400
Outlet diameter (mm)	50
Tare Weight (kg)	See product range
Capacity (L)	See product range

Composition

Tank	304 Stainless Steel
Frame	Mild Steel (galvanised)
Inlet lid / seal	Stainless Steel / various
Outlet / Seal	Stainless Steel / various

UN Certification

Group II certified

Options

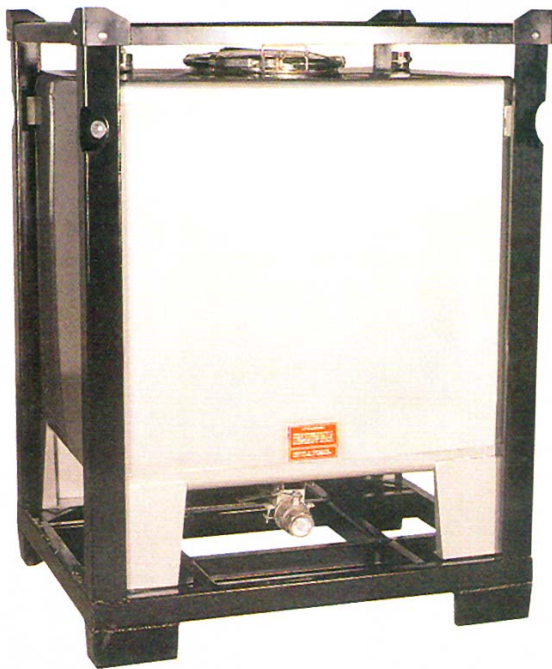
- 316 stainless steel tank
- Butterfly valves (1" or 2")
- Various gasket types
- Quick connect couplings
- 460 mm diameter Manhole lid and cover
- Clampband lids

General Description

The STL is a heavy duty stainless steel IBC designed for the transport and storage of dangerous or flammable liquids.

The container's tank body is a one piece unit constructed from stainless steel with an internally smooth geometry to enable easy cleaning and discharge. The tank has a standard 400 mm central inlet with 6 swing bolt fastening lid. Container includes anti-pressure and anti-vac as standard to 3 psi, 1hg. The frame is manufactured from galvanised steel. The pallet has four way pallet truck entry and a strapping and roping point through the stacking assembly. The base of the tank has a deep drawn sump with a 50 mm stainless steel ball valve outlet. Top lift facility via corner lifting points.

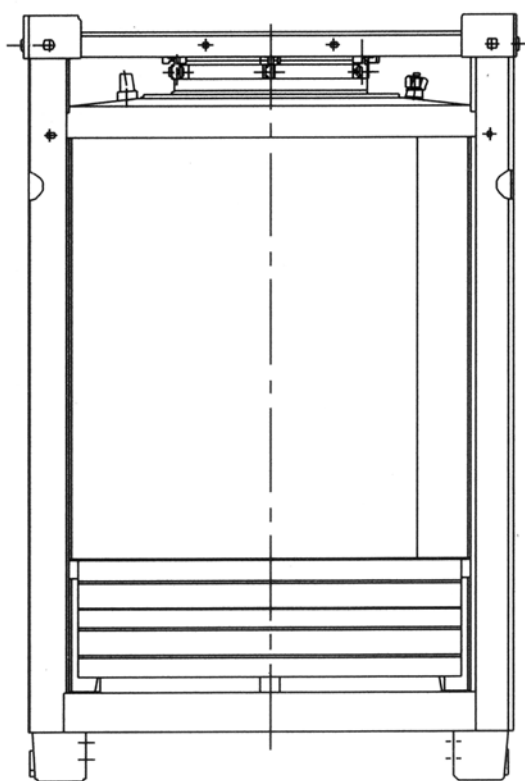
continued overleaf



- A heavy duty stainless steel cubic IBC for dangerous or flammable liquids
- 445 – 2000 litre capacities
- UN Group II certified
- Top Lift facility

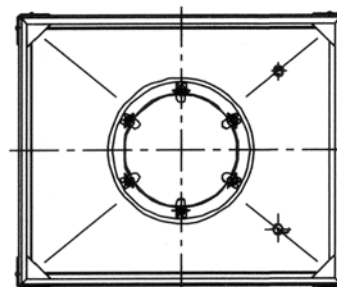
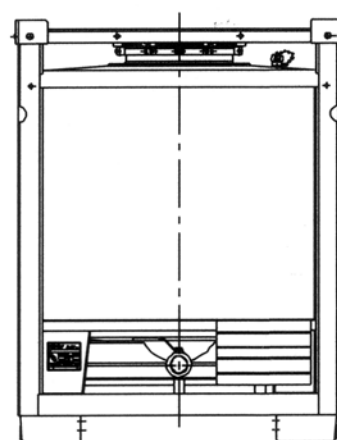
STL Product Range

Type	Volume litres	Pallet Base mm	Dimensions Width/Length/Height mm	Weight Kg	S.G Kg / litre
STL 445	445	800 x 1000	827 / 1027 / 1035	150	1.8
STL 500	500	800 x 1000	827 / 1027 / 1090	160	1.8
STL 600	600	1000 x 1200	1032 / 1232 / 1195	170	1.8
STL 800	800	1000 x 1200	1032 / 1232 / 1400	185	1.8
STL 1000	1000	1000 x 1200	1032 / 1232 / 1600	210	1.8
STL 1250	1250	1000 x 1200	1032 / 1232 / 1855	225	1.2
STL 1500	1500	1000 x 1200	1032 / 1232 / 2110	240	1.2
STL 1800	1800	1000 x 1200	1032 / 1232 / 2415	265	1.2
STL 2000	2000	1000 x 1200	1032 / 1232 / 2620	280	1.2



Side Elevation

Front Elevation



Plan view

Whilst every attempt has been made to ensure that the information provided in this product information sheet is accurate and reliable Francis Ward Limited cannot accept responsibility for the interpretation of the information provided.

It is the responsibility of the user to determine the chemical compatibility of the container with its intended contents.



Francis Ward Limited

Brook House, 221 Bowling Back Lane, Bradford, BD4 8SJ, UK

Tel: +44 (0)1274 707030 Fax: +44 (0)1274 724704

Email: sales@francisward.com

Website: www.francisward.com